



Hampshire
Services

PRIMARY BEHAVIOUR

Primary Behaviour Service
and
Children's Wellbeing Service

Structure

The Clifford Centre

- New Forest and Test Valley (South)
- Team Manager: Lindsey Smith

The Harewood Centre

- Basingstoke and Test Valley (North)
- Team Manager: Elissa Whitby

The Keppel Centre

- Eastleigh
- Team Manager: Lindsey Smith

The Hive

- Hart, Rushmoor and East Hants (North)
- Team Manager: Elissa Whitby

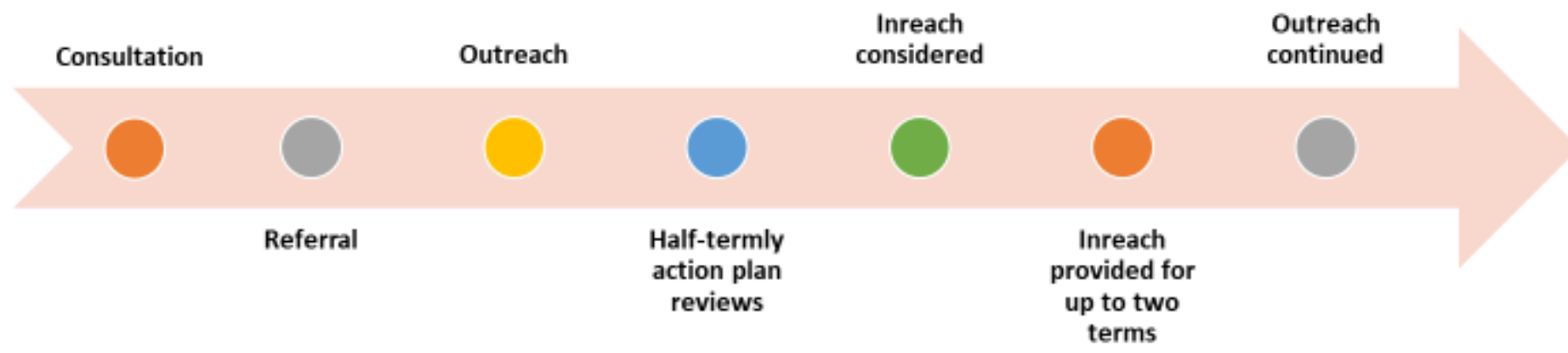
The Lennox Centre

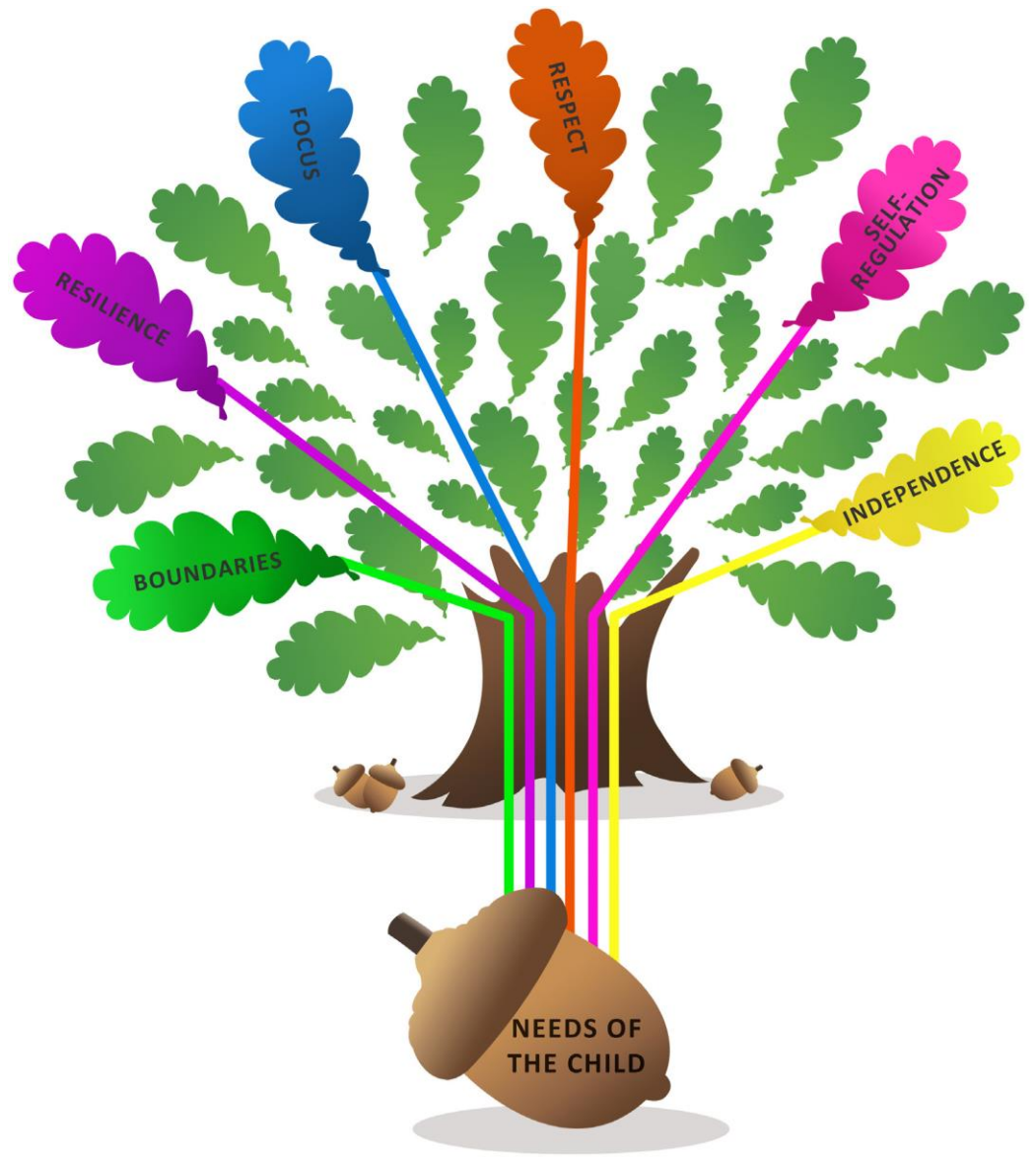
- Fareham and Gosport
- Team Manager: Matthew Gaston

Robin's Oak

- Havant and East Hants (South)
- Team Manager: Matthew Gaston

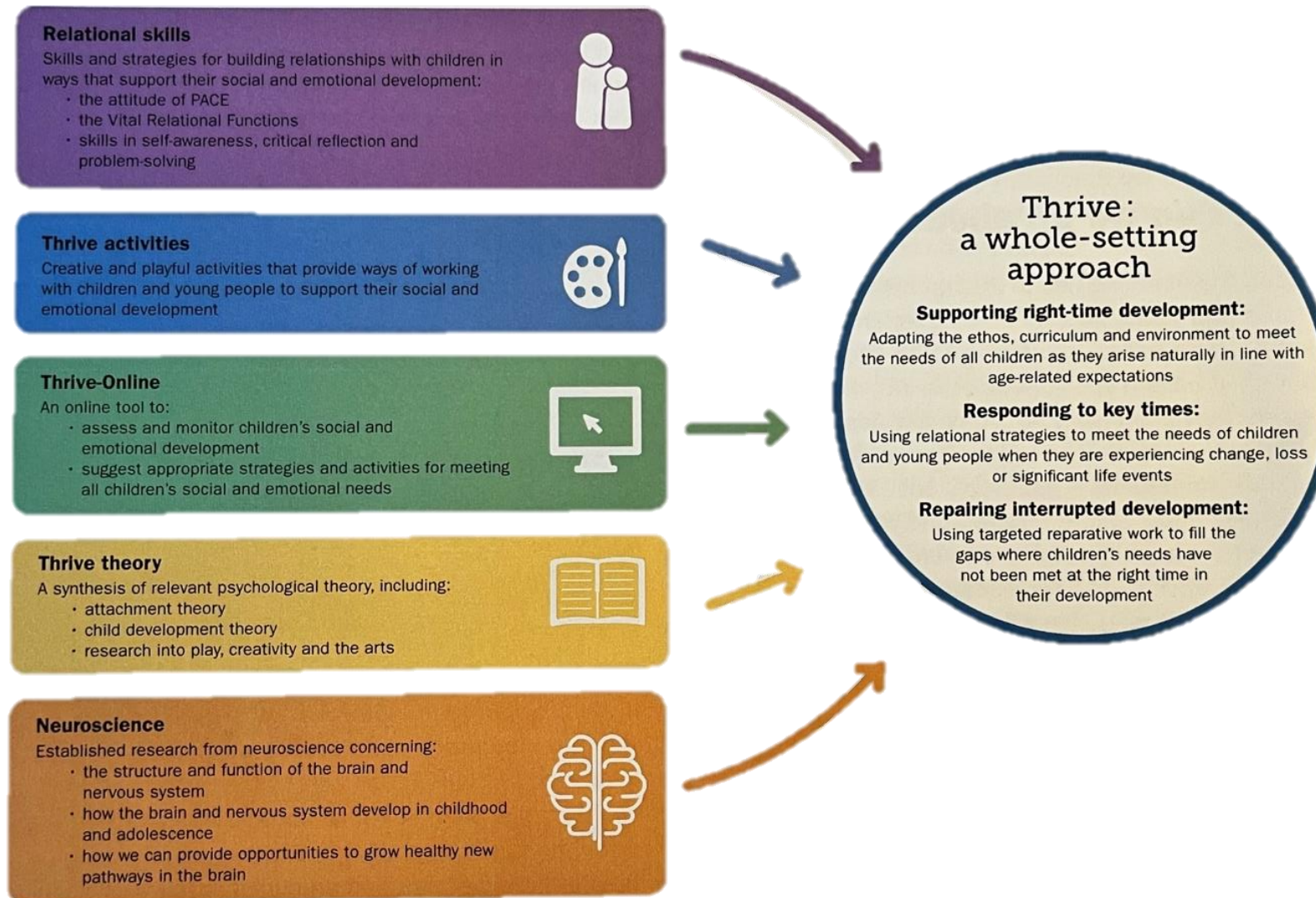







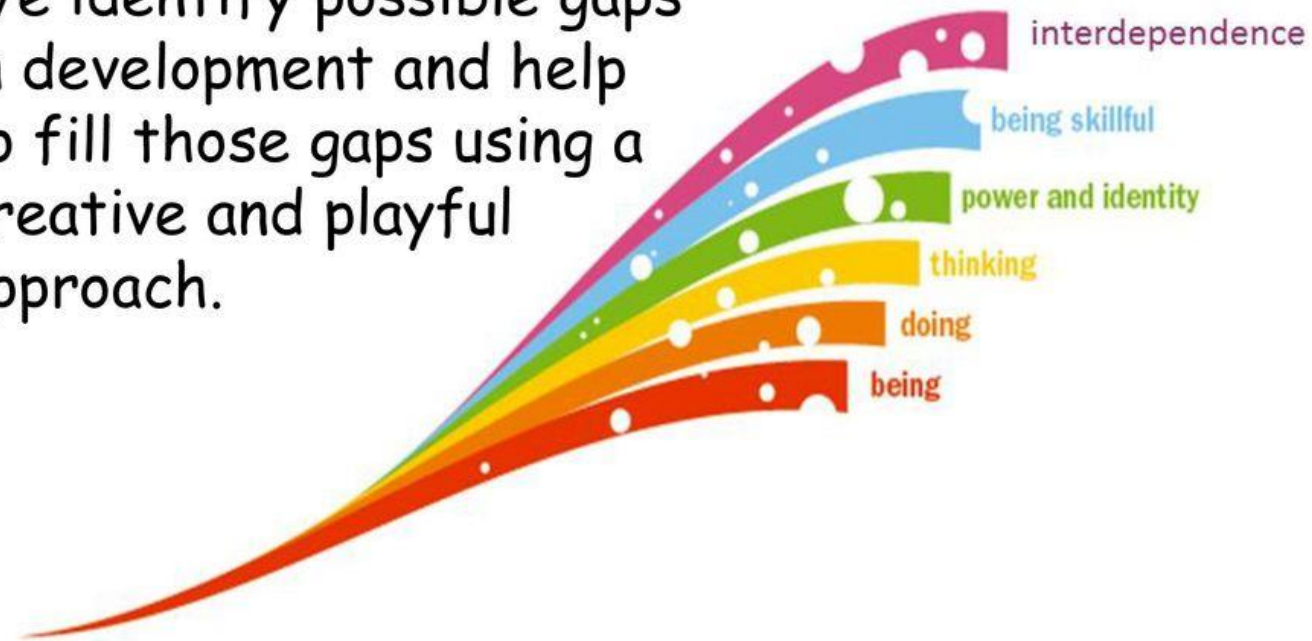
Training 2022/23

Twilight	Twilight Description
De-escalation	A highly popular session that explores how to respond reactively and appropriately to dysregulated children in a time of crisis.
Co-regulation	A session that explores the relationships and how adults can proactively support children to regulate their emotional states. Date: 28/06/2023 Contact: pbs.thehive@hants.gov.uk
School Avoiders – Steps to Success	A session that explores how to use the ‘Steps to Success’ approach to re-integrating children into school and/ or class. All attendees will receive a copy of the PBS ‘Steps to Success’ resource.
Mind Your Language	A session that explores how the language we use when dealing with all aspects of behaviour can help to shape and promote an ethos that supports and benefits all individuals, no matter their background, experiences or needs.
Working with Parents	Working in collaboration with parents is essential when supporting children with complex SEMH needs. This session with our experienced Parent Support Advisors focusses on how this can be achieved successfully.
ACEs and Developmental Trauma	A brief introduction to the ACE revolution and how to support children who may have been or be experiencing trauma.
Anxiety	A session that explores anxiety in schools and how adults can respond to this to best support children who experience anxiety. Date: 05/07/2023 Contact: pbs.thehive@hants.gov.uk
Transition	A session that explores the concepts of endings, loss, moving on and how pupils can be supported effectively across the primary age range.
PBS for New SENCOs and Headteachers	A session for SENCOs and Headteachers who are new to their role and would like to know more about PBS, how we work and what we can offer. Come along and meet your local Team Manager and Assistant Manager.





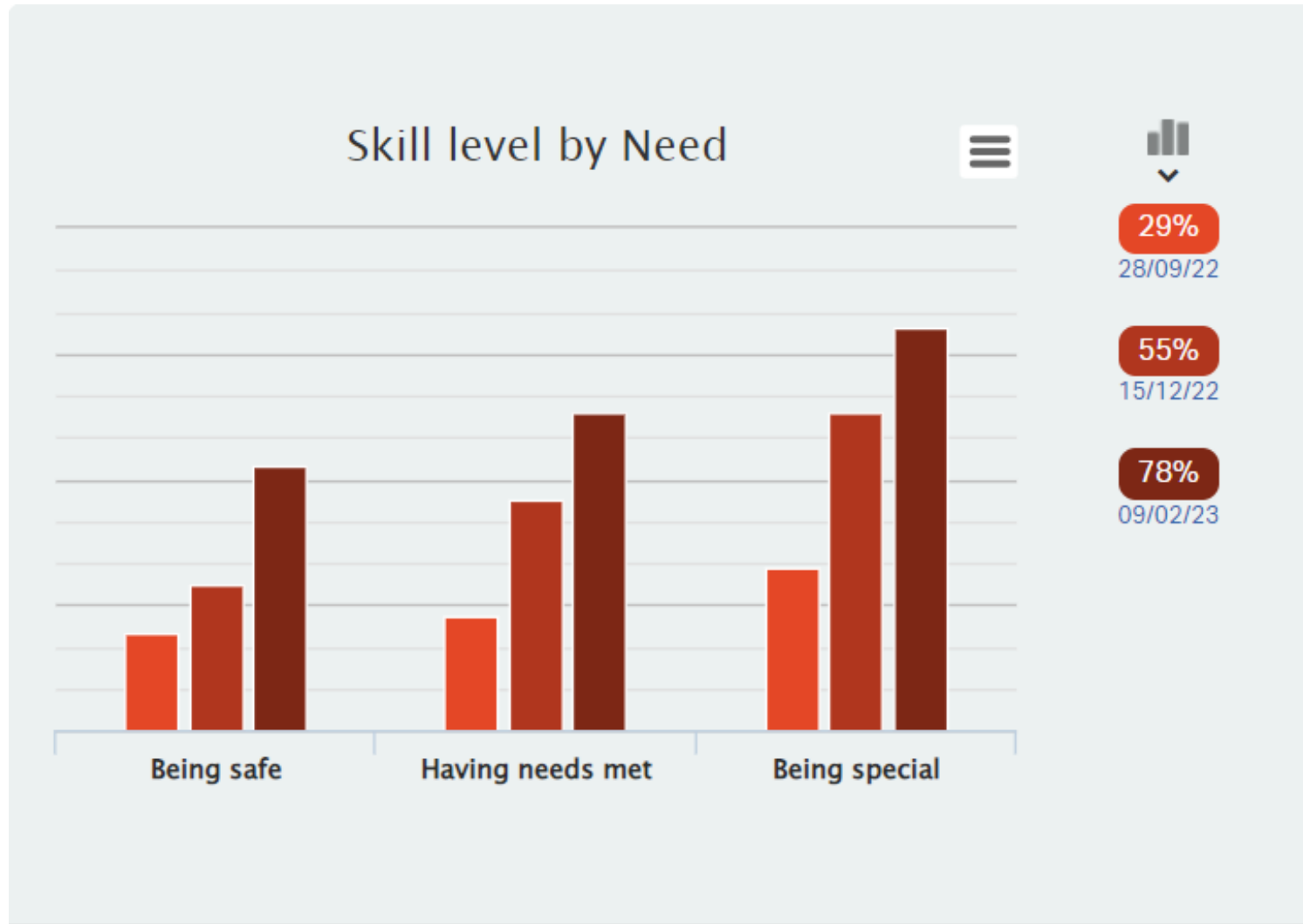
We identify possible gaps
in development and help
to fill those gaps using a
creative and playful
approach.



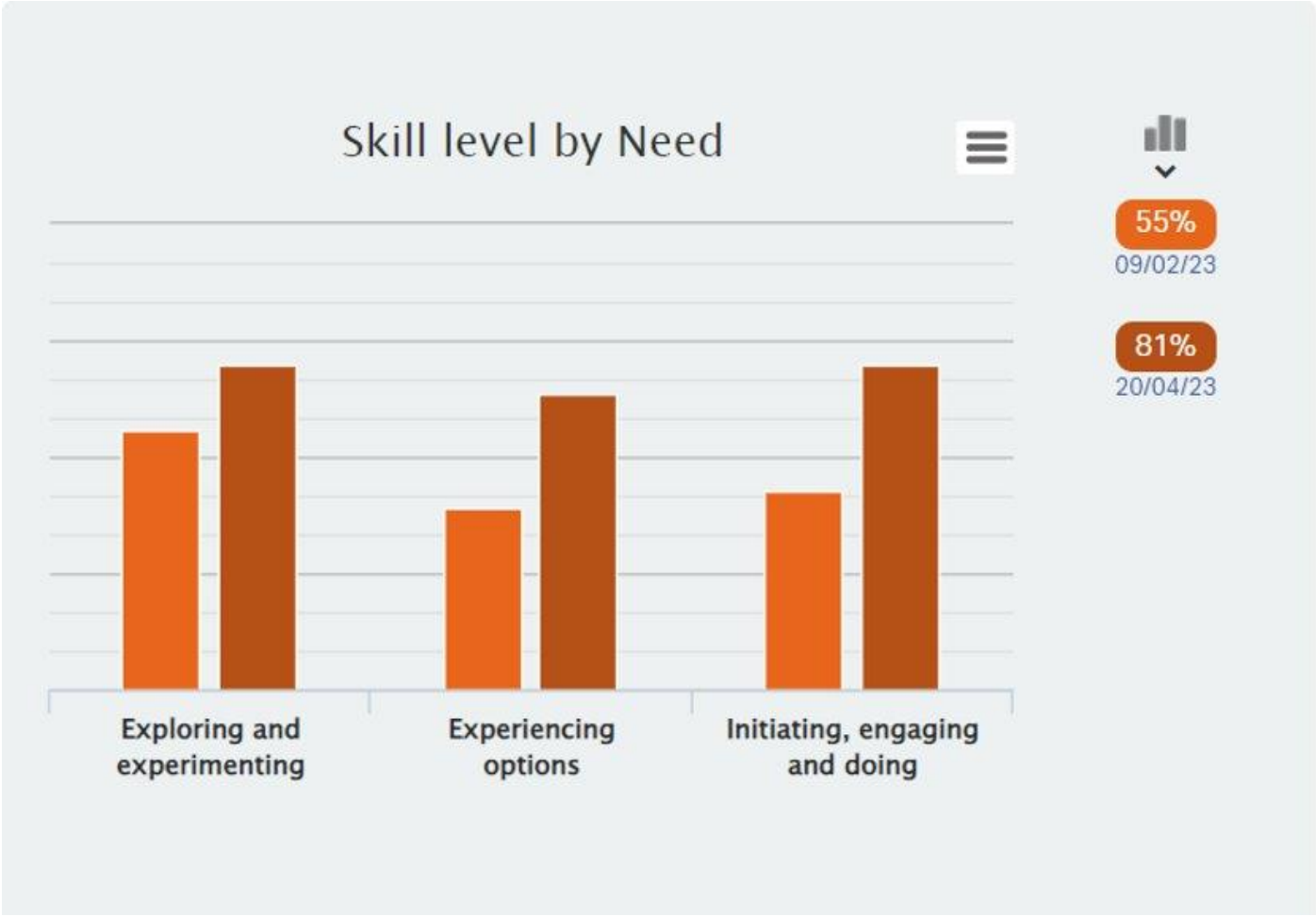
Thrive Activities at The Harewood Centre



Case Study H



Case Study H
continued



Case Study H continued

